

High Performance, Low Cost Filter for Appliance Equipment

WG Series



**UL Recognized
CSA Certified
VDE Approved**

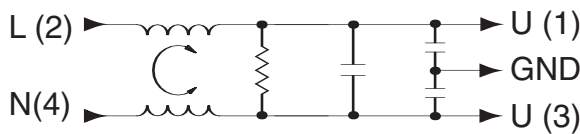


WG Series

The WG series is a cost effective, tubular filter designed specifically for products in the white goods appliance markets. The WG series products have a maximum current rating of 16 amp at 250 VAC (max.). Products within the series have the same fit and form, but differ in their low frequency, common mode performance.

WGA, WBG and WGC products are intended to comply with leakage current for fixed appliances not easily moved from one place to another in normal use. WGD, WGE and WGF products are intended to comply with leakage current requirements for appliances which may be easily moved from one place to another in normal use.

Electrical Schematic



Specifications

	A, B & C Models	D, E & F Models
Leakage current:		
@ 120 vac, 60 Hz	0.74 mA	0.10 mA
@ 250 VAC, 50 Hz	1.25 mA	0.17 mA
Rated voltage (max.):	250 VAC	
Line frequency:	50-60 Hz	

Typical insertion loss in dB:

Line-to-ground in 50 ohm circuit

Part No.	Frequency-MHz									
	0.05	0.1	0.15	0.5	1	2	5	10	20	30
16WGA	3	10	14	31	40	47	53	55	43	36
16WGB	10	17	20	30	37	42	53	55	43	39
16WGC	13	19	23	35	42	49	57	58	45	39
16WGD	6	12	15	26	30	33	36	40	48	52
16WGE	12	17	21	27	30	32	35	40	46	52
16WGF	16	21	22	25	26	32	37	42	48	50

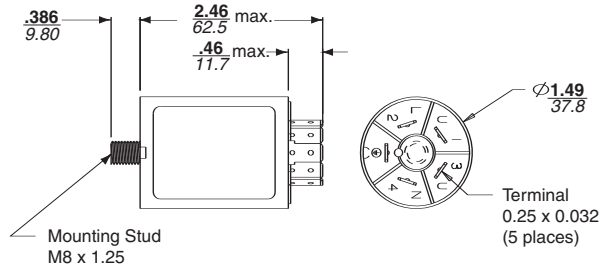
Line-to-line in 50 ohm circuit

Part No.	Frequency-MHz									
	0.05	0.1	0.15	0.5	1	2	5	10	20	30
16WGA	13	19	23	33	40	53	51	42	53	53
16WGB	13	19	23	33	40	49	63	45	60	54
16WGC	13	19	23	33	40	49	62	52	60	54
16WGD	16	23	26	36	43	50	66	58	62	52
16WGE	16	23	25	36	44	50	62	62	60	52
16WGF	16	23	26	36	44	50	60	64	56	48

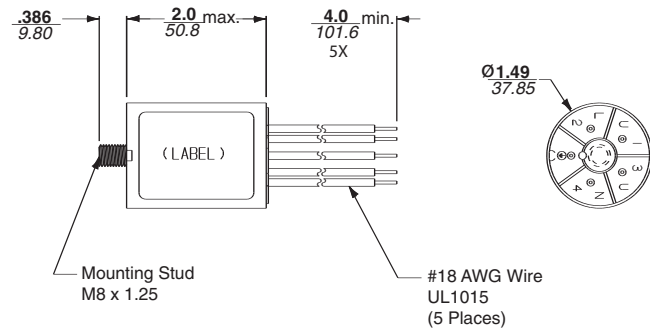
WG Series

Case Styles

16WG/1



16WG/3



16WG/3 Wire Colors

Terminal	Color
L(2)	Brown
N(4)	Blue
U(1)	Brown
Gnd	Grn/Yel
U(3)	Blue



Part Numbers

16WGA1	16WGD1
16WGB1	16WGE1
16WGC1	16WGF1
16WGA3	16WGD3
16WGB3	16WGE3
16WEC3	16WGF3